

# The Guam Board of Registration for Professional Engineers • Architects • Land Surveyors (PEALS)

## Citizen Centric Report FY2024

### Inside this issue:

<b>What We Do</b>	<b>2</b>
<b>Our Finance</b>	<b>3</b>
<b>Future Challenges</b>	<b>4</b>

### MISSION STATEMENT

Our mission is to safeguard the life, safety and welfare of the general public by ensuring that the professionals adhere to established law and promote their professions within the guidelines of ethical practice.



### ABOUT US:

Hafa Adai! The Guam Registration for Professional Engineers, Architects and Land Surveyors was established to oversee the licensing of Engineers, Architects, Landscape Architects and Land Surveyors. The Guam PEALS Board carries out its mission through the regulation of these professions by:

1. Ensuring those entering the practice meet minimum standards of competency in education, experience and examination.
2. Requiring licensing for any person or firms who practice or offer the practice of engineering, architecture, landscape architecture, land surveying and construction management.
3. Establishing standards of practice, enforcing the laws, codes and regulations governing the professional services.

### Board Composition:

The Guam PEALS Board is composed of Seven (7) members. Five (5) members shall be registered under the provision of 22 GCA Chapter 32. The Director of Public Works and One (1) Public member. All members except the DPW Director are appointed by the Governor to served a term for four (4) years. Of the five (5) registered members; two (2) shall be registered architects, two (2) shall be registered engineers and one (1) shall be a land surveyor.

### Board Structure

#### 2024 Board Members and Staff

Cedric Q.T. Cruz ,RA AIA  
Chairman

Zenon E. Belanger, PE  
Vice Chair

Paul L. Santos, PLS  
Secretary/Treasurer

Maria Elizabeth V. Cristi, PE  
Member

Architect Member  
Vacant

Cathynn C. Gogue  
Public Member

Vincent P. Arriola, DPW  
Director  
Member

Catherine S. Gutierrez  
Executive Board Administrator

Vacant  
Administrative Assistant

Nixon N. Isaac  
Board Investigator

## Administration and Support

# WHAT WE DO

### LICENSES

- Registered Architect (RA)
- Landscape Architect (LA)
- Professional Engineer (PE)
  - ◆ Civil Engineer (CE)
  - ◆ Control System Engineer (CSE)
  - ◆ Electrical Engineer (EE)
  - ◆ Environmental Engineer (EnvE)
  - ◆ Fire Protection Engineer (FPE)
  - ◆ Mechanical Engineer (ME)
  - ◆ Structural Engineer
- Professional Land Surveyor

- We provide administrative support to our registrants based on regulations governing the practice of engineering, architecture, landscape architect and land surveying
- We review application and determine eligibility based on education and experiences
- We administer examination
- We interpret and execute practice act, correspondence, reports, fiscal accounting and budgeting personnel
- We are also clearing Building Permits by verification of license on Construction documents
- We participate in the annual meetings for the National

### ENFORCEMENT

- We investigate complaints, issue citations, and penalize individuals and firms engaged in unlawful practice.
- We enforce laws and standards the practice of engineers, architects, landscape architects and land surveyors.
- We update rules and regulations as per national standards and technological advances.

### EXAMS

- ◆ Architect Registration Exam (ARE)
- ◆ California Special Seismic Exam
- ◆ Fundamental of Engineer Exam (FE)
- ◆ Professional Engineer Exam (PE)
  - \*Civil
  - \*Control System
  - \*Electrical
  - \*Environmental
  - \*Fire Protection
  - \*Mechanical
  - \*Structural
- ◆ Professional Land Surveying Exam
  - \*Fundamental of Surveying
  - \*Principal of Surveying
  - \*Guam Land Matter

FY2024 REGISTRANTS	
Landscape Architect	7
Professional Land Surveyor	23
<b>Professional Engineer</b>	<b>698</b>
Registered Architect	124
Total	852
Certificate of Authorization	131

	ON-ISLAND	OFF-ISLAND
<b>LANDSCAPE ARCHITECT</b>	<b>6</b>	<b>1</b>
<b>PROFESSIONAL ENGINEER</b>	<b>489</b>	<b>209</b>
<b>REGISTERED ARCHITECT</b>	<b>41</b>	<b>83</b>
<b>PROFESSIONAL LAND SURVEYOR</b>	<b>15</b>	<b>8</b>
<b>CERTIFICATE OF AUTHORIZATION</b>	<b>79</b>	<b>52</b>

PROFESSIONAL ENGINEER	
Architectural Engineer	1
Civil Engineer	385
Chemical Engineer	6
Control System	1
Electrical Engineer	79
Environmental Engineer	12
Fire Protection Engineer	38
Industrial Engineer	1
Mechanical Engineer	81
Structural Engineer	63
<b>Total</b>	<b>698</b>

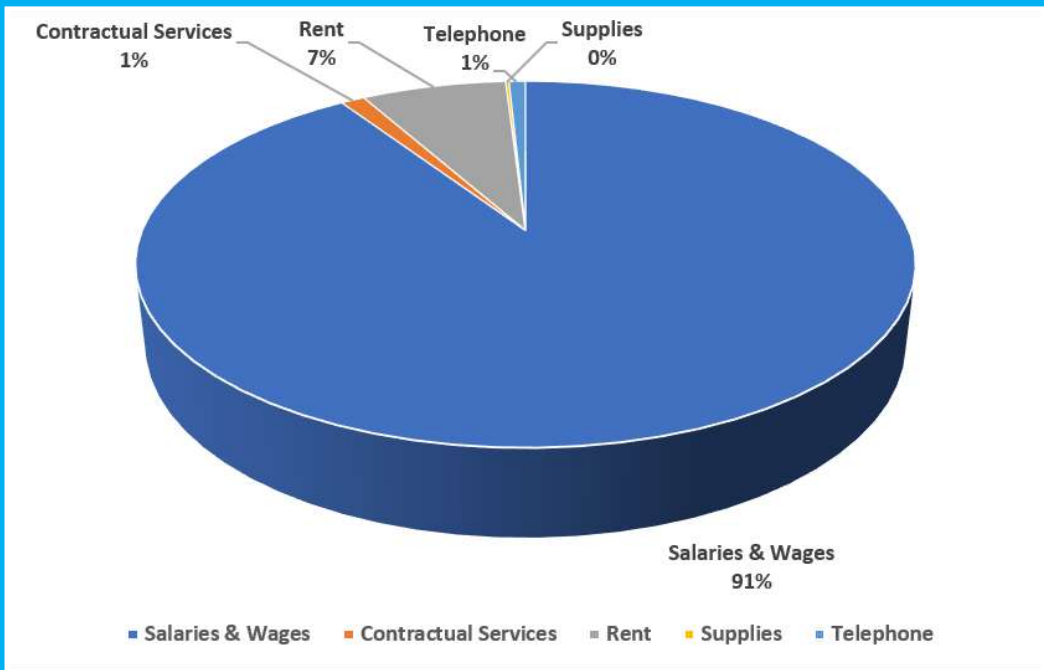
# OUR FINANCE

The PEALS Board's revenue are generated from the fees collected for applications, fines, permit clearances and registrations.

	BUDGET	REVENUE	EXPENDITURES
FY 2023	\$273,064	\$276,569	\$290,753
FY2024	\$315,083	\$276,560	\$321,940

## EXPENDITURES

<b>Salaries and Wages</b>	\$235,797
<b>Contractual Services</b>	\$3,062
<b>Rent</b>	\$18,648
<b>Supplies</b>	\$428
<b>Telephone</b>	\$2,122
<b>Total</b>	\$260,057



# CHALLENGES AND FUTURE OUTLOOK

## OUR CHALLENGES:

- ◆ Decrease in Registration
- ◆ Limited Revenue
- ◆ Amending the PEALS Laws, Rules and Regulations
- ◆ Partnership and Collaboration in Investigation
- ◆ Cooperation in enforcement of the PEALS mandate
- ◆ Maintain Online Registration
- ◆ Establishment of Online Payment system

## OUR FUTURE OUTLOOK:

- ◆ Amend PEALS laws and update Rules and Regulations
- ◆ Upgrade and promote Land Surveying Practice
- ◆ Promote awareness, outreach programs, and continuing education for registrants
- ◆ Keep PEALS membership with NCEES and NCARB
- ◆ Increase licensing fee
- ◆ Partnership and Collaboration in Investigation

Your feedback is important to us!

Please don't hesitate to contact us if you have any questions, comments, or recommendations.

(671) 646-3113 | 3115 | 3138

Email us at [peals@guam.gov](mailto:peals@guam.gov)

Visit our website at [www.guam-peals.org](http://www.guam-peals.org)

## PARTNERSHIP

